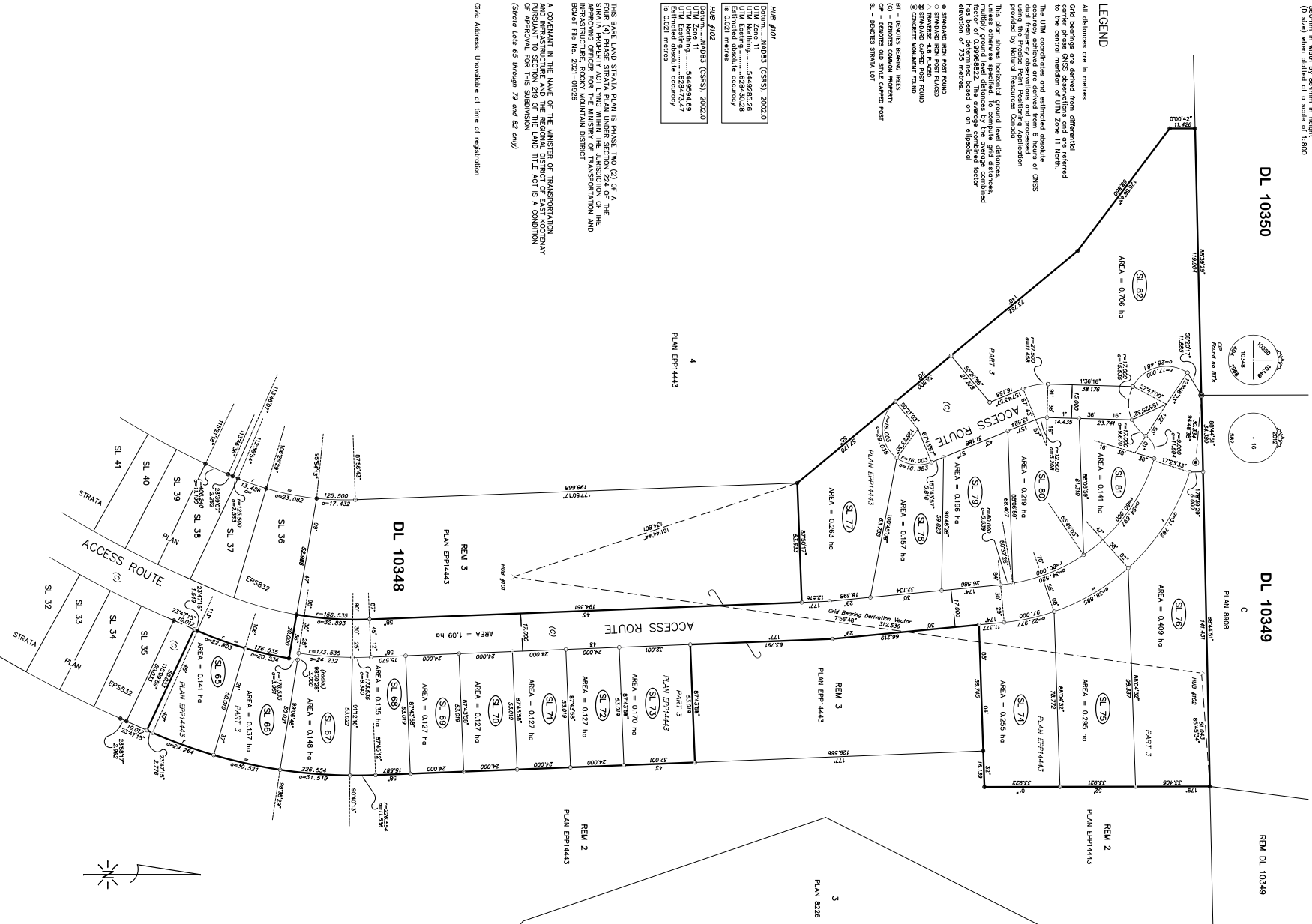


EAST KOOTENAY ASSESSMENT AREA

BCOS 82C.014

The intended print size of this plan is  
 560mm in width by 864mm in height  
 (0 size) when plotted at a scale of 1:800



**LEGEND**

- All distances are in metres
- Grid bearings are derived from differential leveling to the datum of the National Geodetic Survey for the current iteration of UTM zone 11 North.
- The UTM coordinates and estimated absolute accuracy, obtained are derived from 6 hours of GNSS data frequency dependent Post and pre-occupation produced by Natural Resources Canada.
- This plan shows horizontal ground level distances, unless otherwise specified. To compute grid distances a factor of 0.9998022, the average combined factor elevation of 725 metres based on the ellipsoid.
- ▲ STATIONED SIGN POST CROSS
- △ STATIONED SIGN POST
- STATIONED SIGN POST FOUND
- CONCRETE MANHOLE FOUND
- BT - BONES COMMON PROPERTY
- CP - BONES COMMON PROPERTY
- CR - BONES OLD STEE CAVED POST
- SL - BONES STRATA LOT

**HUB #01**

Dist. from NAD83 (GRS), 2002.0	444285.56
Utm Northing	544924.56
Utm Easting	544924.56
Estimated absolute accuracy	± 0.021 metres

**HUB #02**

Dist. from NAD83 (GRS), 2002.0	20022.8
Utm Northing	544924.56
Utm Easting	544924.56
Estimated absolute accuracy	± 0.021 metres

THIS BARE LAND STRATA PLAN IS PHASE TWO (2) OF A FOUR (4) PHASE STRATA PLAN UNDER SECTION 224 OF THE STRATA PROPERTY ACT (S.P.A.) AND IS SUBJECT TO THE APPROVING OFFICER FOR THE MINISTRY OF TRANSPORTATION AND INFRASTRUCTURE, ROCKY MOUNTAIN DISTRICT BOUNDARY NO. 525 - 01268

A COVENANT IN THE NAME OF THE MINISTERS OF TRANSPORTATION AND INFRASTRUCTURE AND THE REGIONAL DISTRICT OF EAST KOOTENAY PURSUANT TO SECTION 219 OF THE LAND TITLE ACT IS A CONDITION OF THIS STRATA PLAN.

(Open to Lots 65 through 79 and 82 only)

City Address: Unavailable at time of registration

STRATA LAND SURVEYING LTD  
 2000 UNIVERSITY AVENUE  
 VANCOUVER BC V6T 1Z6  
 604-271-2222  
**21-080-STRATA-PHASE 2**

This sheet lies within the Regional District of East Kootenay

The field survey represented by this plan was completed on the 16th day of January, 2022. Wade A. Whelan, BCMS 397