

PHASED BARE LAND STRATA PLAN OF LOT 3, DISTRICT LOT 10348, KOOTENAY DISTRICT, PLAN EPP14443 EXCEPT PHASES 1, 2 AND 3, STRATA PLAN EPS832

STRATA PLAN EPS832

SHEET 1 OF 1

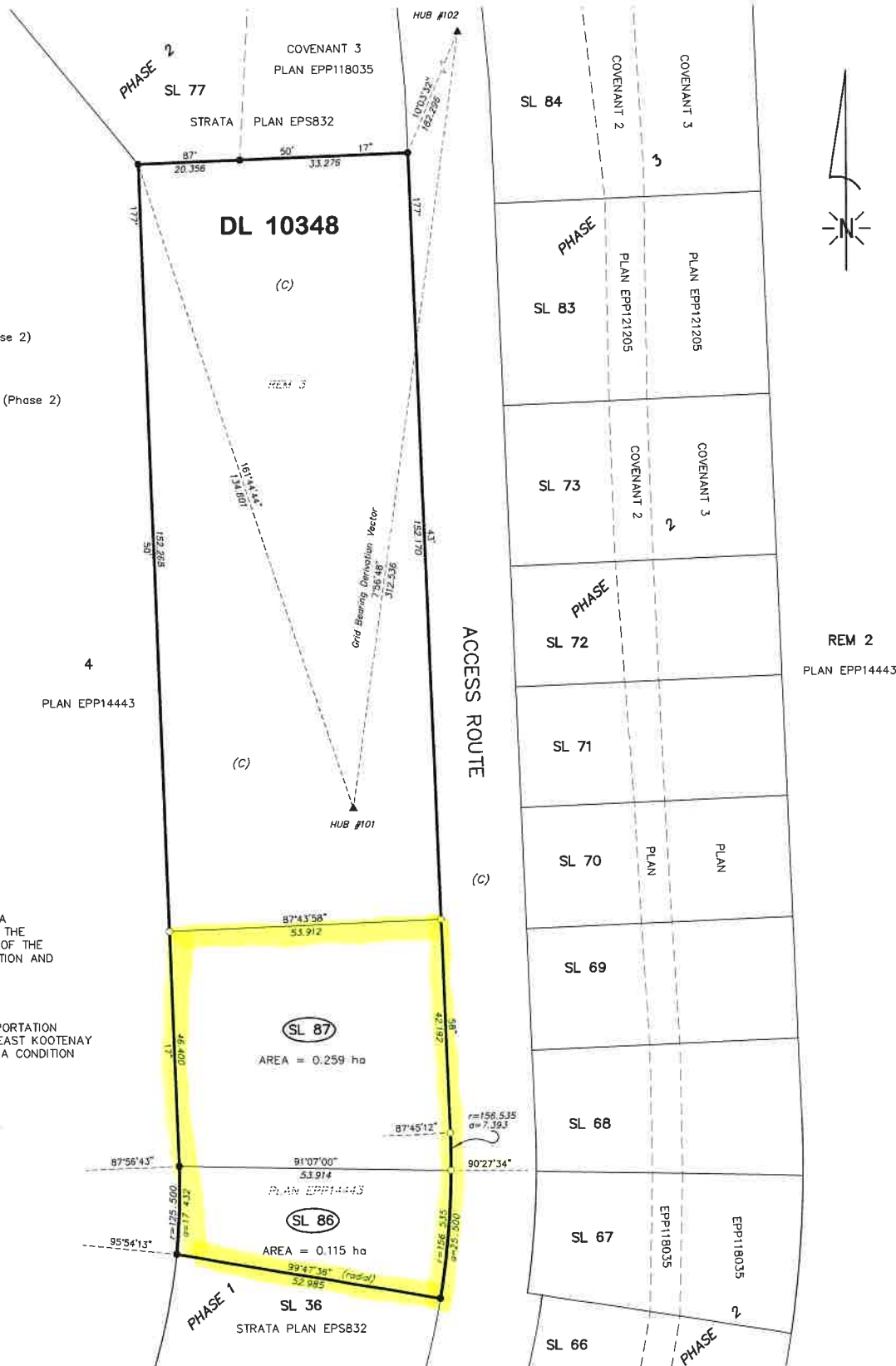
PHASE 4

EAST KOOTENAY ASSESSMENT AREA

BCGS 82G.014



The intended plot size of this plan is 432mm in width by 560mm in height (C size) when plotted at a scale of 1:600



LEGEND

All distances are in metres

Grid bearings are derived from Strata Plan EPS832 (Phase 2) and are referred to the central meridian of UTM Zone 11 North.

The UTM Zone 11 coordinates and estimated absolute accuracy achieved are derived from Strata Plan EPS832 (Phase 2)

This plan shows horizontal ground level distances, unless otherwise specified. To compute grid distances, multiply ground level distances by the average combined factor of 0.99968822. The average combined factor has been determined based on an ellipsoidal elevation of 735 metres.

- STANDARD IRON POST FOUND
- STANDARD IRON POST PLACED
- ▲ TRAVERSE HUB FOUND

- (C) - DENOTES COMMON PROPERTY
- ha - DENOTES HECTARES
- SL - DENOTES STRATA LOT

HUB #101

Datum.....NAD83 (CSRS), 2002.0
 UTM Zone 11
 UTM Northing.....5449285.26
 UTM Easting.....628430.28
 Estimated absolute accuracy is 0.021 metres

HUB #102

Datum.....NAD83 (CSRS), 2002.0
 UTM Zone 11
 UTM Northing.....5449594.69
 UTM Easting.....628473.47
 Estimated absolute accuracy is 0.021 metres

THIS BARE LAND STRATA PLAN IS PHASE FOUR (4) OF A FOUR (4) PHASE STRATA PLAN UNDER SECTION 224 OF THE STRATA PROPERTY ACT LYING WITHIN THE JURISDICTION OF THE APPROVING OFFICER FOR THE MINISTRY OF TRANSPORTATION AND INFRASTRUCTURE, ROCKY MOUNTAIN DISTRICT
 BCMoT File No. 2021-01926

A COVENANT IN THE NAME OF THE MINISTER OF TRANSPORTATION AND INFRASTRUCTURE AND THE REGIONAL DISTRICT OF EAST KOOTENAY PURSUANT TO SECTION 219 OF THE LAND TITLE ACT IS A CONDITION OF APPROVAL FOR THIS SUBDIVISION

Civic Address: Unavailable at time of registration

SL 87

AREA = 0.259 ha

SL 86

AREA = 0.115 ha

SKYLINE LAND SURVEYING LTD.
 125 KOOTENAY STREET NORTH
 CRANBROOK BC VIC 315
 PHONE: (250) 483-1182

21-080-STRATA-PHASE 4

This plan lies within the Regional District of East Kootenay

The field survey represented by this plan was completed on the 1st day of June, 2022. Wade A. Roulette, BCLS 997