

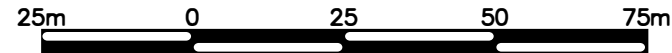


CRYSTAL LAKE LOTS			
Lot 1 - SOLD	\$198,000	Lot 22	\$175,000
Lot 2	\$201,000	Lot 23	\$175,000
Lot 3	\$215,000	Lot 24	\$175,000
Lot 4	\$189,000	Lot 25	\$175,000
Lot 5	\$180,000	Lot 26	\$175,000
Lot 6 - SOLD	\$191,000	Lot 27	\$175,000
Lot 7	\$202,000	Lot 28	\$175,000
Lot 8 - SOLD	\$204,000	Lot 29	\$175,000
Lot 9	\$206,000	Lot 30 - SOLD	\$200,000
Lot 10	\$239,000	Lot 31 - SOLD	\$279,000
Lot 11	\$239,000	Lot 32 - SOLD	\$255,000
Lot 12	\$245,000	Lot 33 - SOLD	\$255,000
Lot 13	\$206,000	Lot 34 - SOLD	\$255,000
Lot 14 - SOLD	\$205,000	Lot 35 - SOLD	\$255,000
Lot 15	\$182,000	Lot 36 - SOLD	\$255,000
Lot 16	\$180,000	Lot 37 - SOLD	\$255,000
Lot 17	\$180,000	Lot 38	\$255,000
Lot 18	\$180,000	Lot 39	\$255,000
Lot 19	\$202,000	Lot 40 - SOLD	\$255,000
Lot 20	\$202,000	Lot 41 - SOLD	\$287,000
Lot 21	\$175,000		

For more information, please contact Reto Barrington at 250-278-1444 or email info@kooceanusavillage.com



PLAN TO ACCOMPANY THE DISCLOSURE STATEMENT FOR PHASE 1 OF A BARE LAND STRATA OF PART OF LOT A, DISTRICT LOT 10348, KOOTENAY DISTRICT, PLAN EPP125572

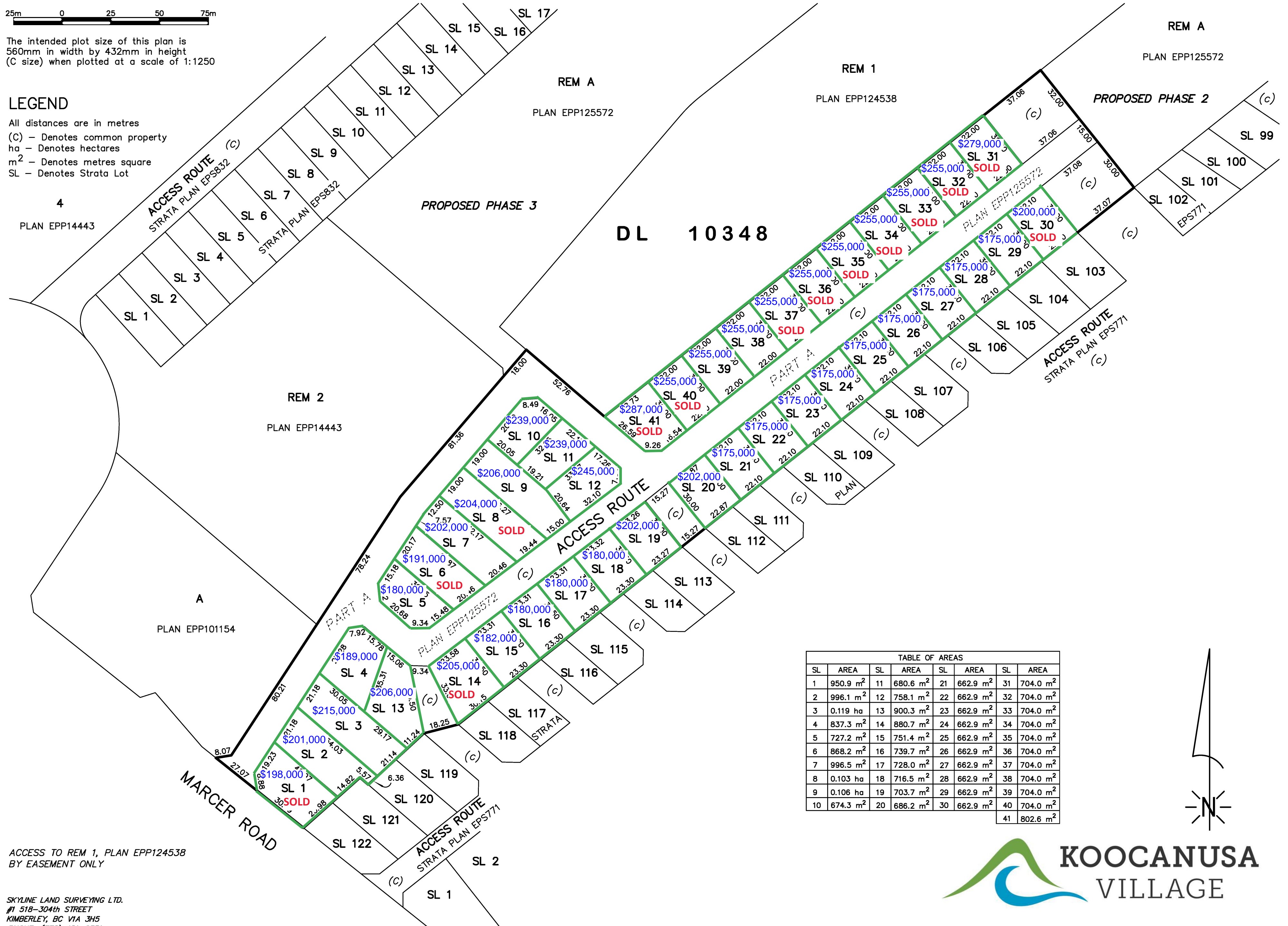


The intended plot size of this plan is 560mm in width by 432mm in height (C size) when plotted at a scale of 1:1250

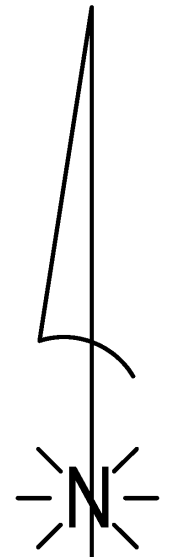
LEGEND

All distances are in metres
 (C) - Denotes common property
 ha - Denotes hectares
 m² - Denotes metres square
 SL - Denotes Strata Lot

4
 PLAN EPP14443



SL	AREA	SL	AREA	SL	AREA	SL	AREA
1	950.9 m ²	11	680.6 m ²	21	662.9 m ²	31	704.0 m ²
2	996.1 m ²	12	758.1 m ²	22	662.9 m ²	32	704.0 m ²
3	0.119 ha	13	900.3 m ²	23	662.9 m ²	33	704.0 m ²
4	837.3 m ²	14	880.7 m ²	24	662.9 m ²	34	704.0 m ²
5	727.2 m ²	15	751.4 m ²	25	662.9 m ²	35	704.0 m ²
6	868.2 m ²	16	739.7 m ²	26	662.9 m ²	36	704.0 m ²
7	996.5 m ²	17	728.0 m ²	27	662.9 m ²	37	704.0 m ²
8	0.103 ha	18	716.5 m ²	28	662.9 m ²	38	704.0 m ²
9	0.106 ha	19	703.7 m ²	29	662.9 m ²	39	704.0 m ²
10	674.3 m ²	20	686.2 m ²	30	662.9 m ²	40	704.0 m ²
				41	802.6 m ²		



ACCESS TO REM 1, PLAN EPP124538
 BY EASEMENT ONLY

SKYLINE LAND SURVEYING LTD.
 #1 518-304th STREET
 KIMBERLEY, BC V1A 3H5
 PHONE: (778) 481-0351

22-042-PHASE 1-DISCLOSURE

This plan lies within the Regional District of East Kootenay



This plan was completed on the 15th day of January, 2023